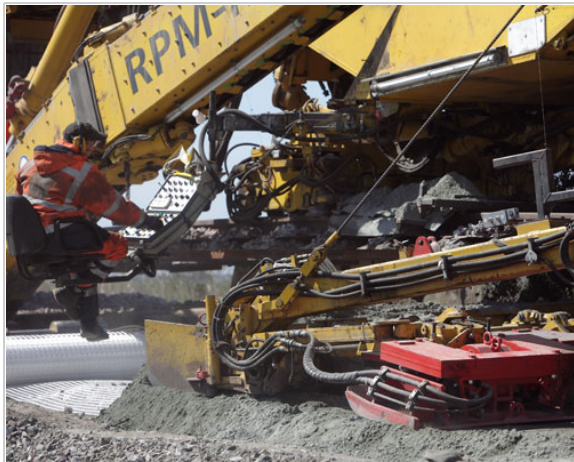


Referenz



Subsoil remediation, Abelitz – Marienhafte, Lower Saxony

1,800 m FPL laying with geotextile in two layers

Description of works	<ul style="list-style-type: none"> • 1,800 m mechanical FPL laying in two layers (2 x 25 cm), separated by geotextile • 90 m conventional FPL laying with geotextile • Renewal of two railway crossings
Execution	<p>SPITZKE AG Brandenburg Branch SPITZKE AG Lower Saxony Branch SPITZKE AG Track-Laying Machines Division SPITZKE SCHWEISSTECHNIK GmbH SLG SPITZKE LOGISTIK GmbH</p>
Client	DB Netz AG
Place of performance	Abelitz – Marienhafte railway line
Period	06.04.2010 – 24.04.2010
Special features	<ul style="list-style-type: none"> • FPL laying using the RPM-RS-900 recycling, formation rehabilitation and cleaning machine • Single track line with overhead line

Referenz

Contact

Ralph Löffler
SPITZKE AG
Engineering Director
Phone: +49 33701 901-0
Fax: +49 33701 901-291
Email: Ralph.Loeffler@spitzke.com